

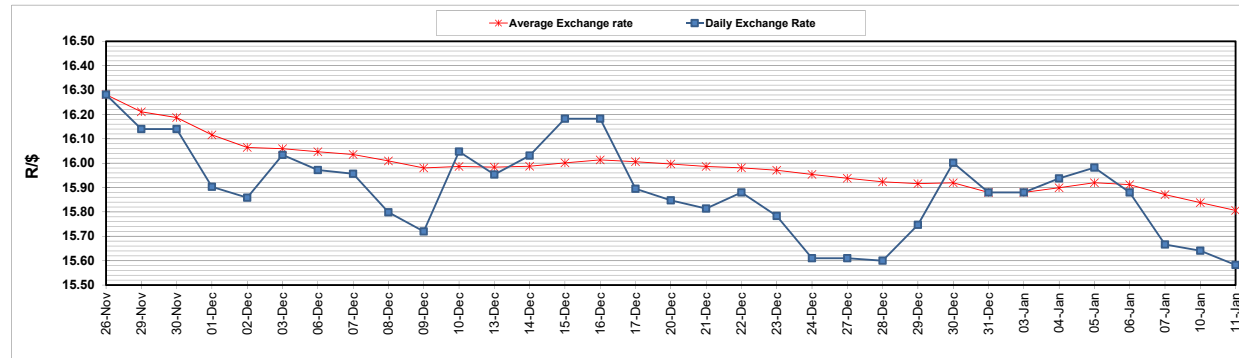
	PETROL 95 ULP	PETROL 93 ULP & LRP	DIESEL 0.05%	DIESEL 0.005%	ILL. PAR.
GAUTENG PUMP PRICE (SA c/l) AS FROM 05/01/2022	1,961.000	1,936.000	-	-	-
WHOLESALE PRICE (SA c/l) AS FROM 05/01/2022	-	-	1,724.680	1,728.080	1,096.688
SINGLE NATIONAL MAXIMUM RETAIL PRICE	-	-	-	-	1,394.000
BASIC FUEL PRICE - 11/01/2022 (SA c/l)	953.837	941.380	968.444	970.549	974.140
PRESS RELEASE CONTRIBUTION TO BFP 05/01/2022 - 11/01/2022 (SA c/l)	903.470	888.470	885.630	889.030	875.128
UNIT OVER/(UNDER) RECOVERY - 11/01/2022 (SA c/l)	(50.367)	(52.910)	(82.814)	(81.519)	(99.012)
AVERAGE BASIC FUEL PRICE 31/12/2021 - 11/01/2022	957.028	943.933	953.389	955.700	944.490
AVERAGE UNIT OVER/(UNDER) RECOVERY 31/12/2021 - 11/01/2022	(27.233)	(28.013)	(41.509)	(39.670)	(42.737)

ANALYSIS MOVEMENT OF AVERAGE OVER/(UNDER) RECOVERY

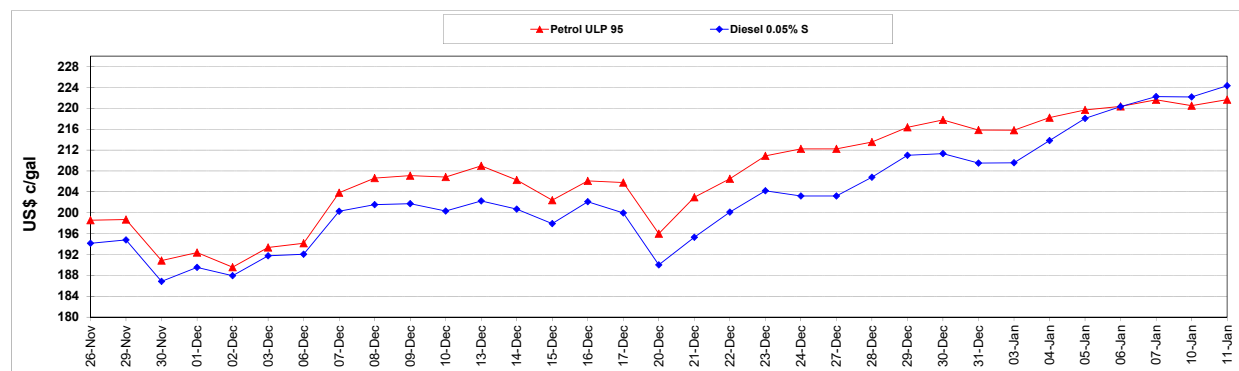
	PETROL 95	PETROL 93	DIESEL 0.05%	DIESEL 0.005%	ILL. PAR.
- MOVEMENT IN INTERNATIONAL PRODUCT PRICES	(34.105)	(34.791)	(48.355)	(46.533)	(49.519)
- MOVEMENT IN EXCHANGE RATE	6.872	6.778	6.846	6.863	6.782
AVERAGE UNIT OVER/(UNDER) RECOVERY 31/12/2021 - 11/01/2022	(27.233)	(28.013)	(41.509)	(39.670)	(42.737)

R/\$ EXCHANGE RATE - (R/\$15.5825 - 11/01/2022)

EXCHANGE RATE USED IN BASIC FUEL PRICE



INTERNATIONAL PRODUCT PRICES OF BASKET USED IN BASIC FUEL PRICE



BASIC FUEL PRICE IN SA CENTS PER LITRE

